



Introduction

Power-over-Ethernet (PoE) technology brings new capability and device expansion to network deployments. IP cameras, indoor wireless access points, VoIP (Voice-over- IP) phone systems and many other client devices are capable of receiving their power over Ethernet cabling. These EnGenius switches provide management with tools to configure and control the network through its simple web-based Graphical User Interface (GUI).

Unpacking

Open the shipping carton and carefully unpack its contents. Please consult the packing list below to make sure all the items are present and undamaged. Please note that the model you have purchased may appear slightly different. If any item is found missing or damaged, please contact your local EnGenius reseller for replacement.

Package content

- EnGenius switch
- Quick Installation Guide
- RJ45 console cable
- Rack Mount kit
- Power cord

Before you connect

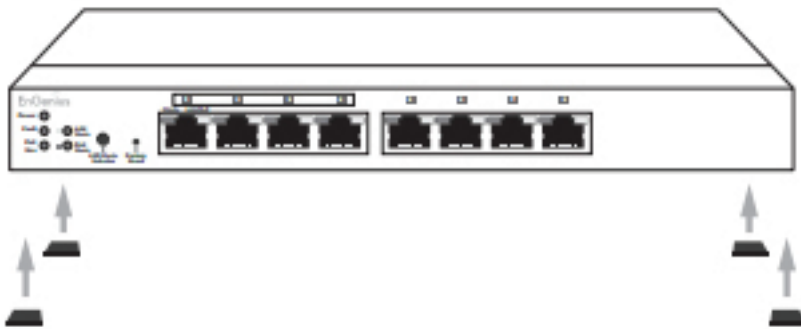
- Do not place heavy objects on the switch.
- Do not expose the switch to direct sunlight.
- Make sure that there is adequate space (at least 2 inches) for proper heat dissipation around the switch. Please do not cover the ventilation holes on all sides of the switch.
- Install the switch in a fairly cool and dry environment.
- Install the switch in a site free from strong electromagnetic source.
- Visually inspect the power jack and make sure that it is fully secured to the power cord.



Switch installation

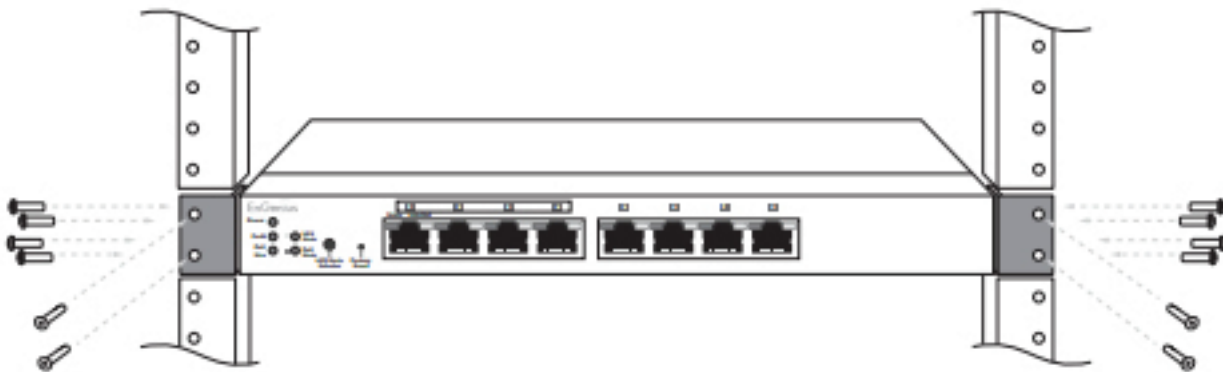
Installing the switch on a flat surface

Install the switch on a flat surface such as a desktop or shelf, attach the rubber feet on the bottom at each corner of the switch. The rubber feet cushion the switch from shock or vibration, and secure space between devices when stacking.



Rack installation

To mount the Switch onto a rack, attach the included rack mounting brackets to the switch. Then secure the mounting brackets to the rack. The switch can be mounted in an EIA standard size, 19-inch rack, which can be placed in a wiring closet with other equipment.





Connecting the switch

Connecting the devices to the switch and managing the switch using a web browser

Step 1: Connect the supplied power cord to the switch and plug the other end into an electrical outlet. Verify the Power LED indicator is lit on the switch.

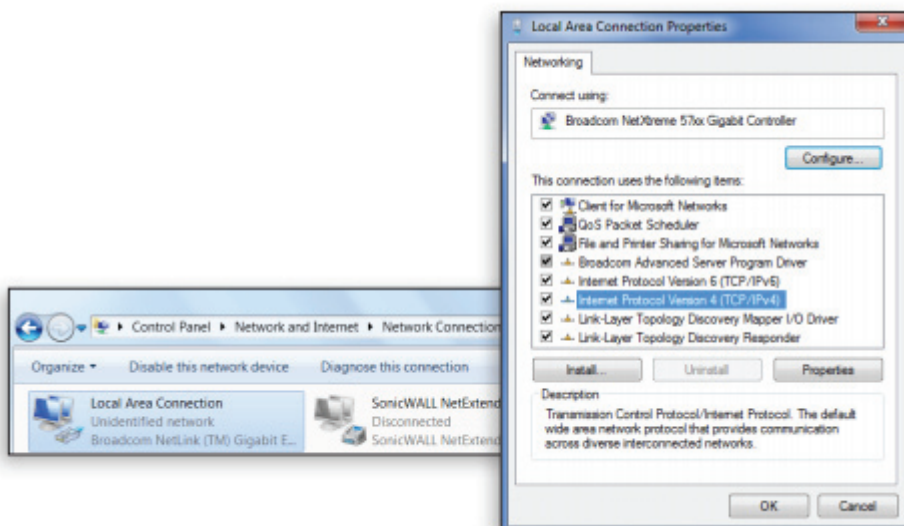


Step 2: Wait for the Switch to complete boot up. It might take few minutes for the switch to complete boot up.

Step 3: Connect one end of a Category 5/6 Ethernet cable into the Gigabit (10/100/1000) Ethernet port on the switch's front panel and the other end to Ethernet port on the computer. Verify that the LED on Ethernet ports of the switch are green.

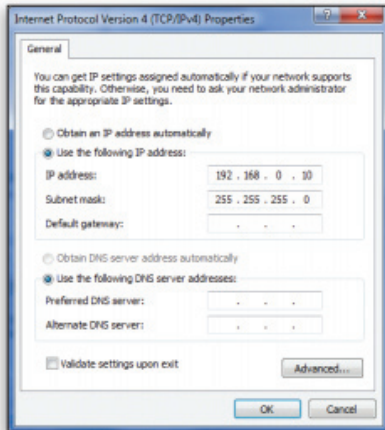


Step 4: Once your computer is on, ensure that your TCP/IP is set to **On** or **Enabled**. Open 'Network Connections' and then click 'Local Area Connection', Select **Internet Protocol Version 4 (TCP/IPv4)**.

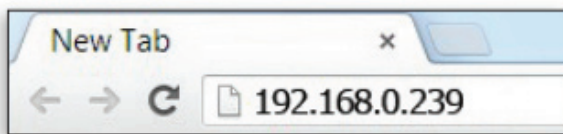




Step 5: If your computer is already on a network, ensure that you have set it to a Static IP Address on the interface. (Example: 192.168.0.10 and the Subnet Mask address as 255.255.255.0)



Step 6: Open a web browser on your computer. In the address bar of the web browser, enter 192.168.0.239 and enter.



Step 7: A login screen will appear. By default, username is *admin* and the password is *password*. Enter the current username and password of the switch and then click **Login**.

Step 8: The switch's web-based Graphical User Interface (GUI) page screen will appear. Use it to perform switch configuration and monitoring.

